

PART OF THE E 1/2, SEC. 32 & THE W 1/2, SEC. 33, T.7N., R.2W., S.L.B. & M.

PLAIN CITY  
BLOCK 6, PLAT A

TAXING UNIT: 21, 296

SCALE 1" = 50'

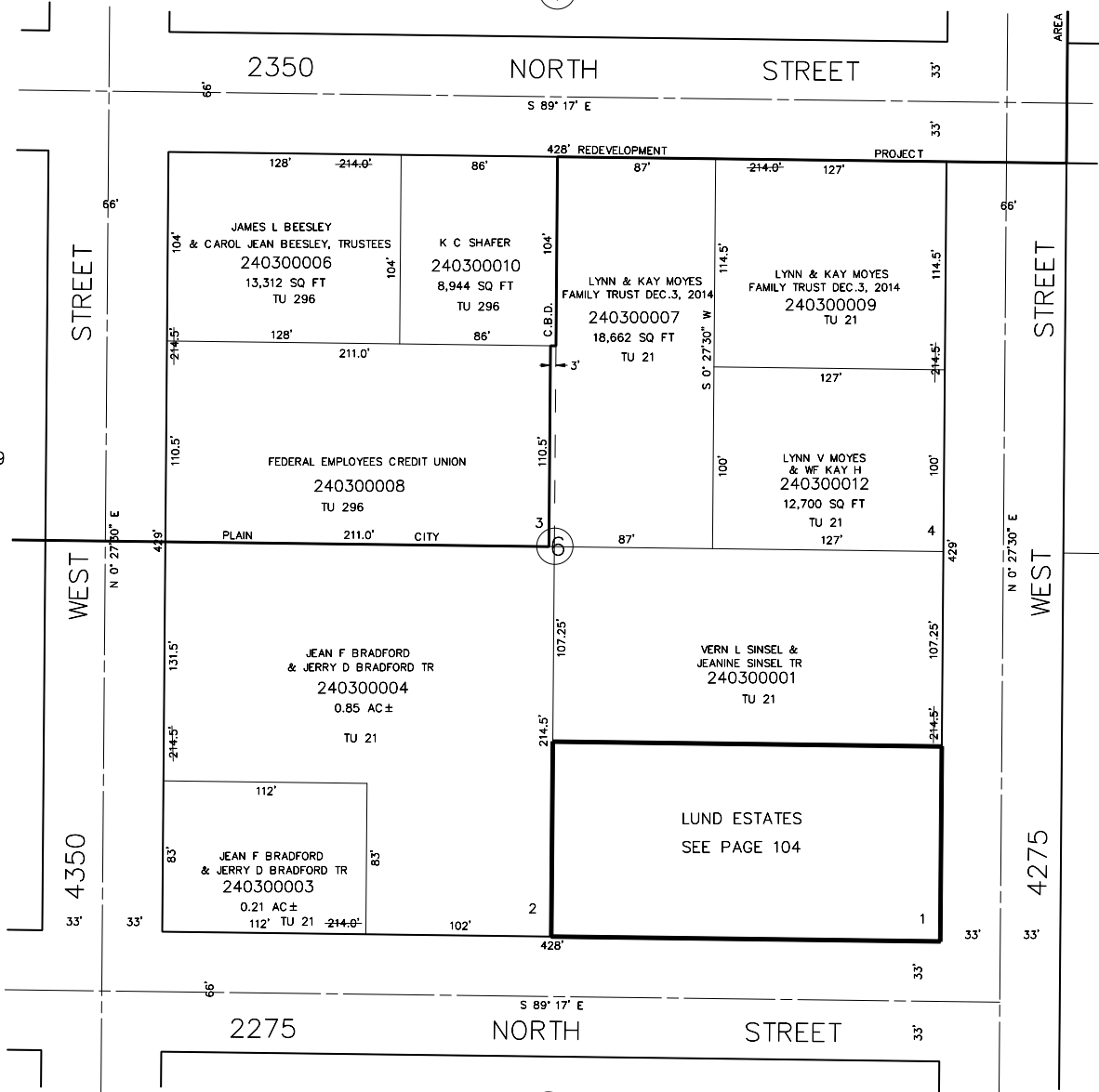
SEE PAGE 31

7

SEE PAGE 29

5

SEE PLAT B  
PAGE 51



SEE PAGE 25

SEE ORIGINAL DEDICATION  
PLAT OF PLAIN CITY IN  
BOOK 5, PAGE 80 OF RECORDS.